

North Branch Cascades

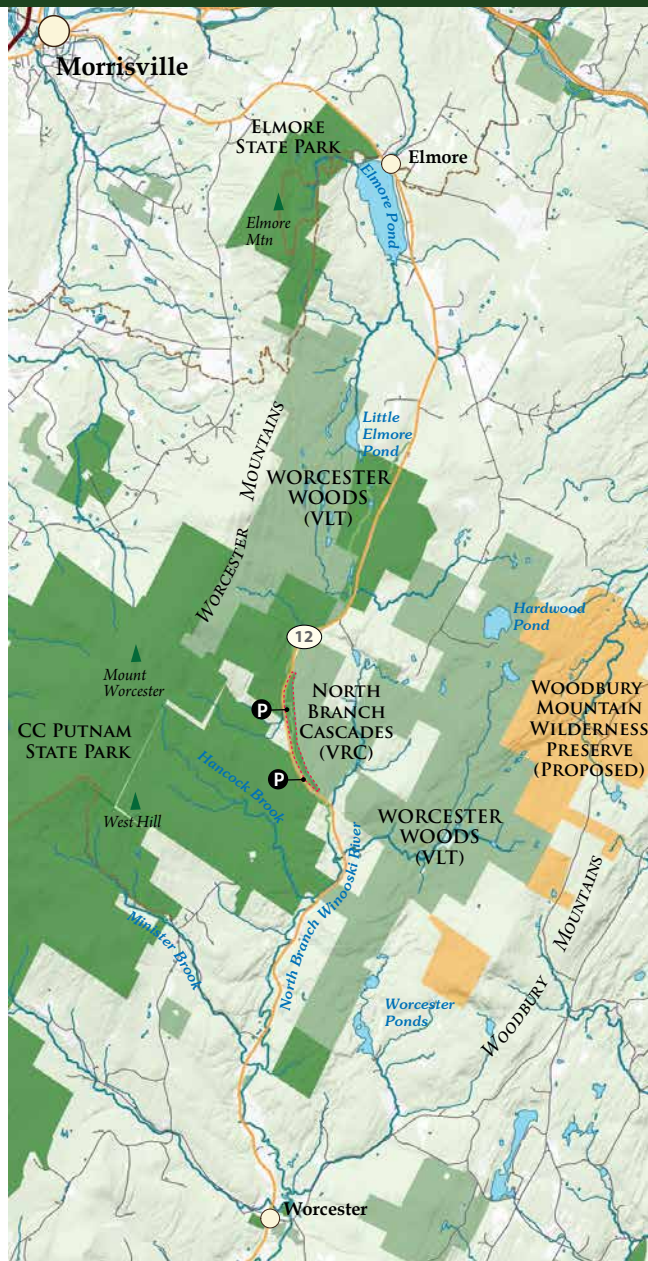


The North Branch of the Winooski flows 23 miles from a series of wetlands near Little Elmore Pond to the main stem in Montpelier. Its headwaters, known as the Worcester Woods, are some of the most intact forest lands in central Vermont. As a result, the upper river has excellent water quality as it descends over a series of bedrock ledges, waterfalls, and pools known as the North Branch Cascades.

In 2018, Vermont Land Trust purchased 6,000 acres of surrounding lands from private timber companies as part of an initiative to protect nearly 20,000 acres of working forest and wildlife habitat in the Worcester Woods. 78 acres along the North Branch were conveyed to Vermont River Conservancy to develop the North Branch Cascades Trail as a recreation destination for all ages and abilities.

The North Branch Cascades Trail follows a section of the old Route 12 roadbed that was abandoned in the 1950s. Trail development was a multi-year project involving replacing failed culverts, establishing parking areas, laying gravel, and installing bridges and step stones.

Worcester Woods



Vermont River Conservancy

Vermont River Conservancy protects public access, wildlife habitat, and clean waters by conserving undeveloped land along rivers, lakes, and wetlands of Vermont. Our organization was started in response to treasured swimming holes, canoe put-ins, fishing accesses and waterfalls being closed off to the communities that had traditionally used them. Since 1995, Vermont River Conservancy has completed projects at popular local swimming holes, gorges and waterfalls, fishing and boating accesses – protecting rivers for all to enjoy.

How You Can Help

Volunteer: Monitor trail conditions and complete basic maintenance tasks. To sign-up, e-mail vrc@vermontriverconservancy.org



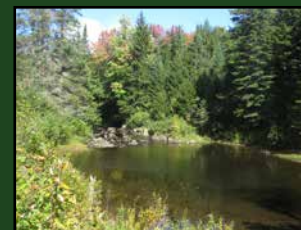
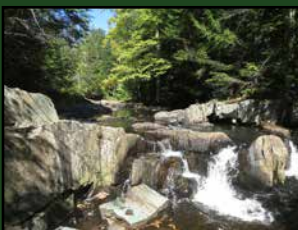
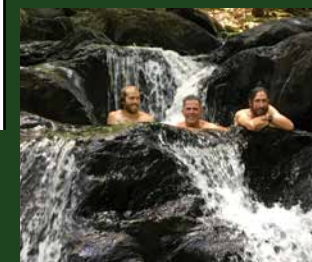
Donate: Give in support of Vermont River Conservancy's work to protect and care for these kinds of special places at: vermontriverconservancy.org/donate

Trail Guidelines

- **Carry in, carry out.** Leave this land cleaner than you found it, and clean up after your dog.
- **Open dawn to dusk.** No camping. Gates may be closed at night.
- **No glass.** Broken glass is dangerous to visitors.
- **No campfires.** Protect this site's ecology.
- **Leash your dog.** Respect other users.
- **Use caution when swimming.** Be wary of high water, shallow pools, and slippery rocks.

NORTH BRANCH CASCADES TRAIL

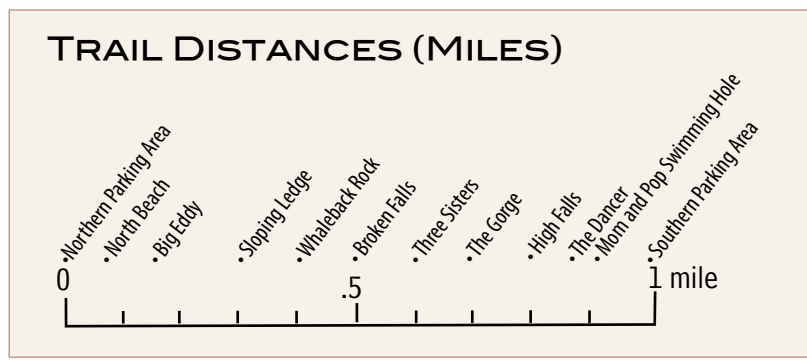
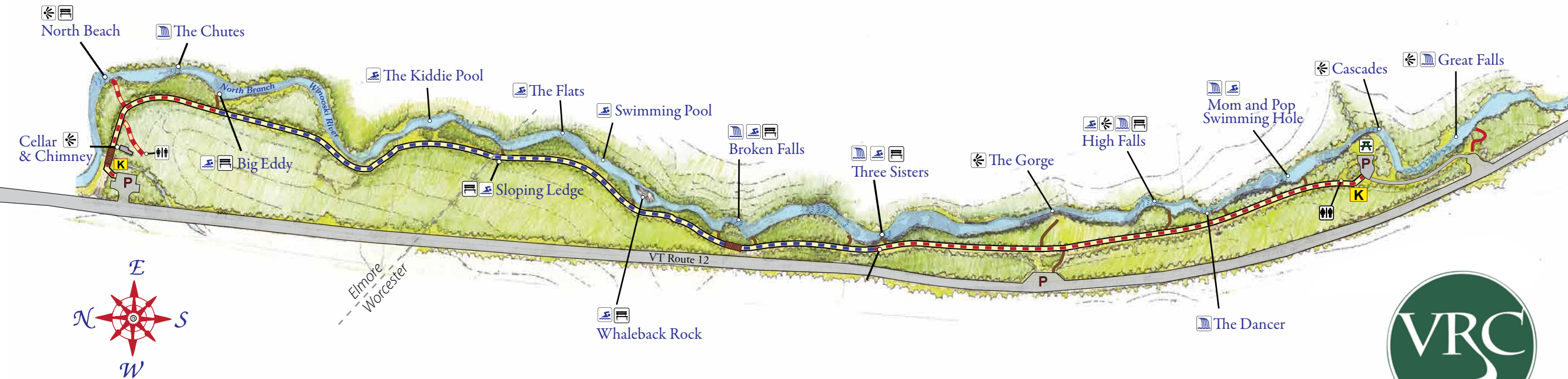
A walking path along the North Branch of the Winooski River, providing access to its cascades and swimming holes for all ages and abilities.



29 Main St., Montpelier VT 05602
info@vermontriverconservancy.org
(802) 229-0820

NORTH BRANCH CASCADES TRAIL

A walking path along the North Branch of the Winooski River, providing access to its cascades and swimming holes for all ages and abilities.



LEGEND

North Branch Cascades Trail	Parking Area	Bench
Universally Accessible	Picnic Area	Kiosk
Natural Surface	Waterfall	Bridge
Spur Trail (Developed)	Scenic Overlook	Composting Toilet
Spur Trail (Planned)	Swimming Hole	Rapid

0 250 500 750 ft.

Cartography by Noah Pollock
 Illustration by Elizabeth Courtney
 Photos courtesy of John Lazenby
 This brochure was funded in part by AARP

